

▪ HASP Activation

To use NIS-Elements V3.20 or later, HASP Key should be activated.

By doing the Activation, date (GMT) that uses NIS-Elements first is written into HASP Key and becomes possible to use NIS-Elements since V3.20.

There are two ways in HASP Activation; one is "Online Activation" another one is "Manual Activation".

In the "Online Activation", there are methods of using "NIS-Elements" and using "HASP Update".

"HASP Update" is one of the functions included in software of "HASP Utilities" bundled to the product of NIS-Elements.

In "HASP Update", "Manual Activation" that can activate HASP Key in the environment from which PC that operates NIS-Elements is not connected with the Internet is software used.

It is software that can use PC that operates NIS-Elements is not connected with the electronic environment.

The method of "Online Activation" would be explained here.

Please contact the Nikon product handling shop where NIS-Elements was bought when it fail in "Online Activation" or PC cannot be used by the electronic environment.

• Method of using NIS-Elements

1. Necessary Environment

The following conditions are necessary for Online Activation using NIS-Elements.

- 1) PC that installs NIS-Elements is connected with the Internet.
- 2) HASP Key has been plugged in PC.

2. Procedure

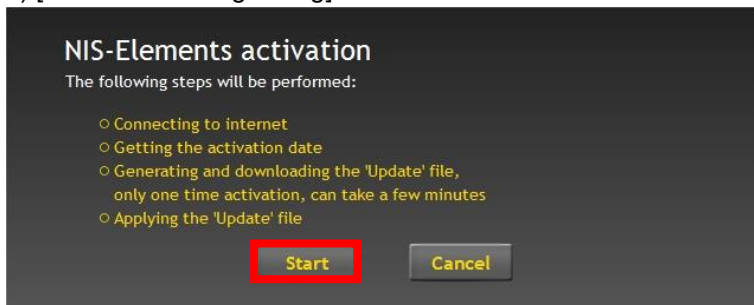
Online Activation that used NIS-Elements is activated when starts since NIS-Elements V3.20 first time.

After installed the NIS-Elements, please start it.

When NIS-Elements are installed, Online Activation is done.

"Activation starting dialog" is displayed.

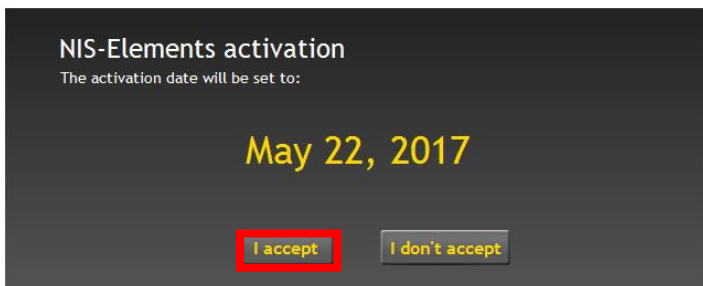
1) [Activation starting dialog]



Please press "Start" button.

"Activation Confirmation dialog" is displayed.

2) [Activation Confirmation dialog]

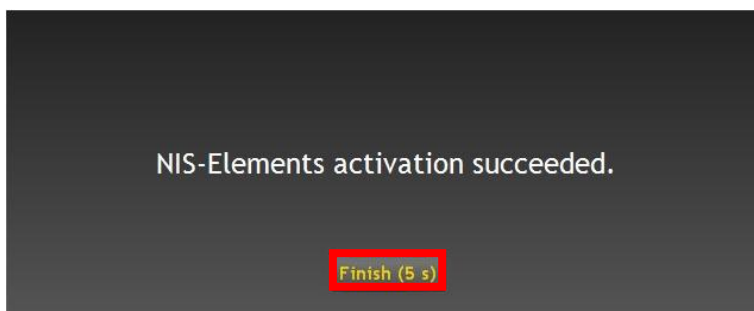


Please press "Continue" button.

After success the activation, "Activation succeeded dialog" is displayed.

Please wait during 1 or 2 minute until activating is finished

3) [Activation succeeded dialog]



NIS-Elements starts when press "Finish" button.

Even if the "Finish" button is not pressed, NIS-Elements would start in five seconds.

• Method of using HASP Update

1. Necessary Environment

The following conditions are necessary for Online Activation using HASP Update.

- 1) PC that installs HASP Utilities is connected with the Internet.
- 2) HASP Key has been plugged in PC.

2. Procedure

HASP Utilities is necessary for doing Online Activation by using HASP Update.

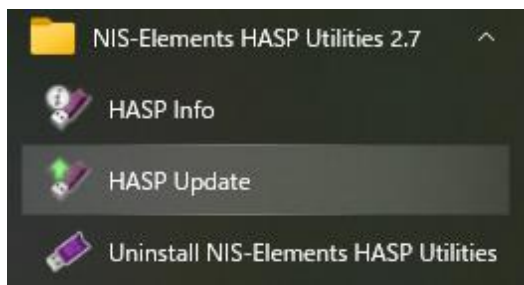
First of all, please install software "HASP_Utilities_2.5.exe" bundled to the product in PC.

1) Install HASP Utilities



The installation begins when "HASP_Utilities_2.7.exe" is double-clicked.

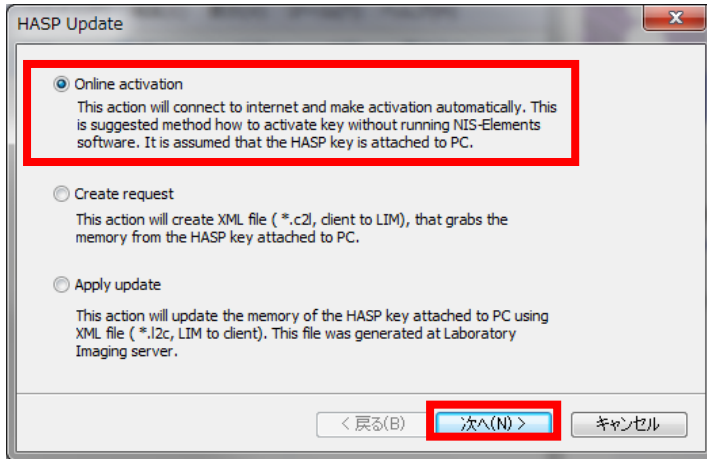
2) Start HASP Update



Please select "HASP Update" in Program menu after installed HASP Utilities.

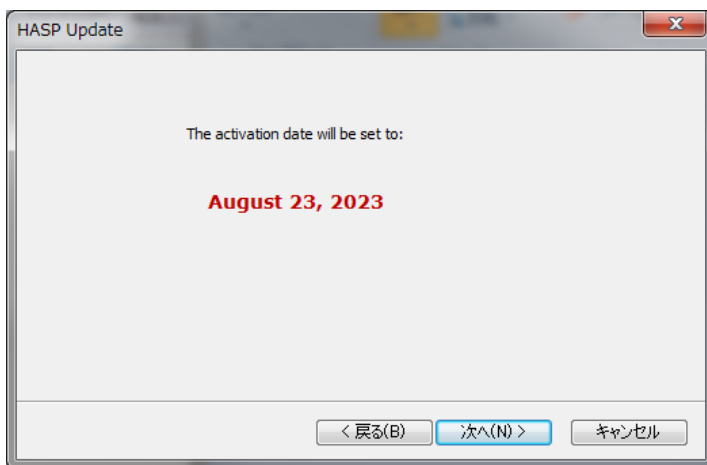
HASP Update is started and "Activation starting dialog" is displayed.

3) [Activation starting dialog]



Please select “Online Activation” and press “Next” button.
The “Activation Confirmation dialog” after a while displayed.

4) [Activation Confirmation dialog]



Activation Date is displayed.
Please press “Next” button, activation is begun.
When Activation succeeds,
“Activation succeeded dialog” is displayed.

It takes about 1 or 2 minutes until Activation ends.

5) [Activation succeeded dialog]



Activation finished normally.
Please press “Finish” button“

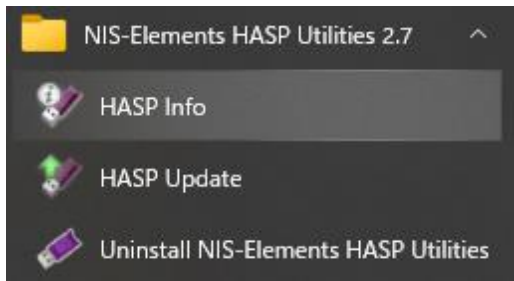
• Success confirmation of Activation

You can confirm Activation successfully using HASP Info.

When you success activation, the activation date is display part of bottom of HASP Info.

The HASP Info could be displayed by the following procedure.

1) HASP Info 起動

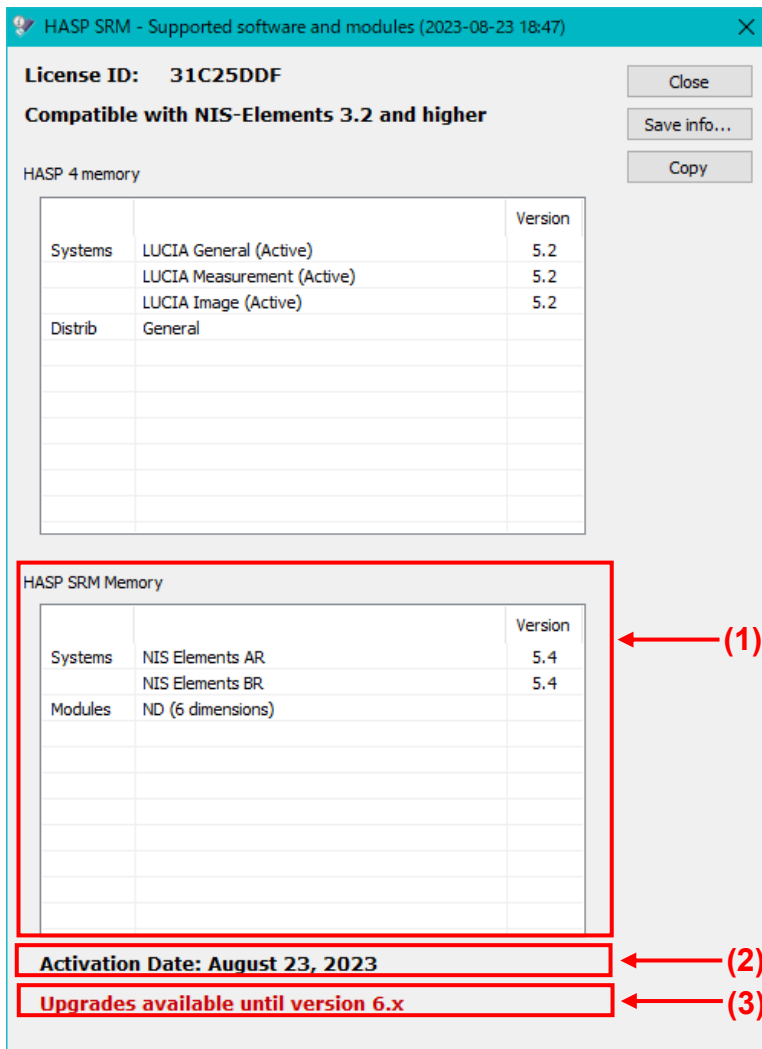


· When a HASP Key is activated with NIS-Elements, please choose HASP Info of NIS-Elements.

· When a HASP Key is activated with HASP Update, please choose HASP info from Start menu.

HASP Info dialog is displayed.

2) [HASP Info dialog]



Activation data is displayed to (2) of HASP Info by doing Activation.

Upgrades available version is displayed in (3)

HASP information is displayed in (1).