



CMM laser scanning



L100

The ultimate
CMM laser scanner
combining productivity
and accuracy



It's a Nikon ...

The L100 CMM laser scanner offers the best possible combination of speed, accuracy and ease-of-use. Suited for both surface and feature measurement, the L100 quickly delivers accurate data and insightful part-to-CAD comparison reports even on shiny or multi-material surfaces.

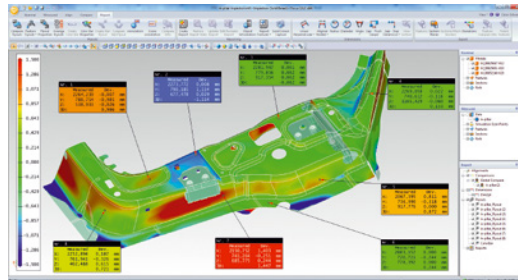
The L100 builds on 20 years of experience in optical metrology. With the L100, Nikon Metrology confirms their technology leadership in the field of CMM laser scanning.

L100

Higher productivity
Better understanding
Faster decisions
Superior product quality

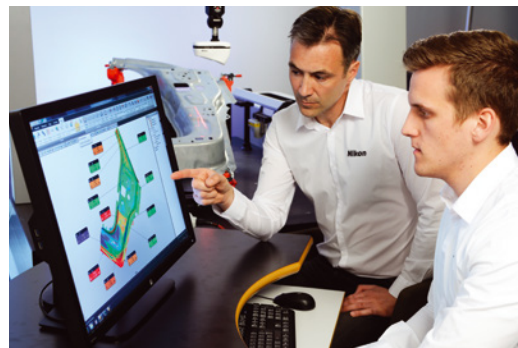


8 Reasons to choose Nikon non-contact metrology



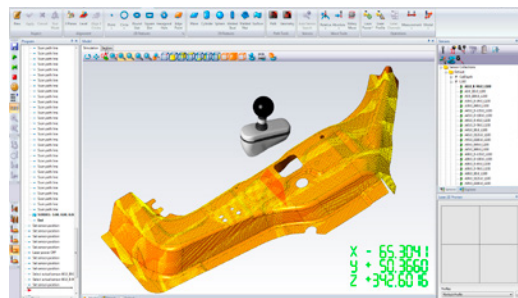
BETTER INSIGHTS IN DEVIATIONS

- Detailed, colorful part-to-CAD surface / profile / feature reports enable precise visualisation of dimensional quality
- Leads to faster decision-making and corrective actions
- Results in fewer and shorter design iterations and faster time-to-market
- Shortens production downtime through faster troubleshooting



FACILITATE COMMUNICATION

- A picture is worth a thousand numbers
- Easy-to-interpret graphical reports
- Exchange unambiguous results with internal or external colleagues or suppliers



INCREASE INSPECTION PRODUCTIVITY

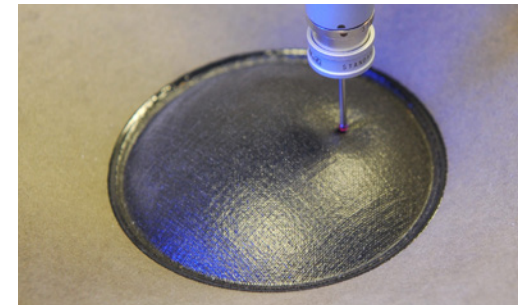
- Laser scanners collect more information in less time
- Faster feature measurement due to fewer CMM movements
- Easy off-line CAD-based programming saves on preparation and modification of measurement programs



ENHANCE THE CAPABILITY OF YOUR CURRENT CMM

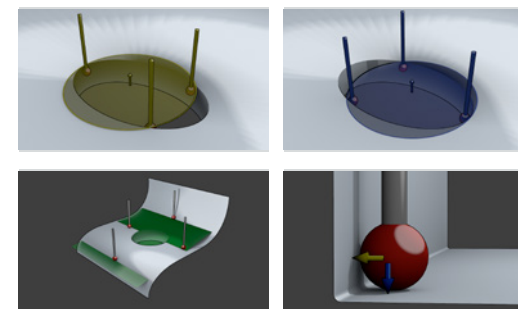
- Upgrade to a versatile multi-sensor CMM offering both non-contact and touch probe inspection
- Retrofit existing CMMs controller hardware and software

Retrofit kits are available for most leading CMM controller brands



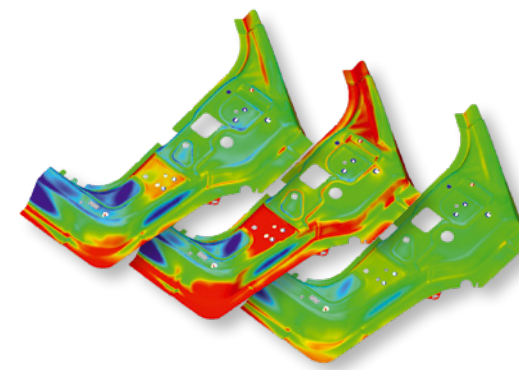
MEASURE SOFT AND FRAGILE COMPONENTS

- Measure delicate surfaces that cannot be touched
- No deformation of soft materials like foams, rubber, membranes, etc
- Scan any material - No special treatment required for dark or shiny parts



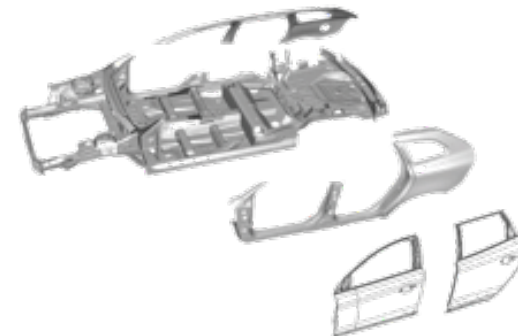
IMPROVED DATA QUALITY

- Overcomes errors inherent to tactile probing
 - No errors due to probe tip compensation
 - Uses large numbers of measuring points to extract features or reference planes compared to just a few points in case of tactile probing
- Measures complex surfaces with fine detail



REDO ANY ANALYSIS AT ANY TIME

- Perform additional analyses on existing measuring data even when the physical part isn't available anymore
- Easily compare samples from different measuring sessions
- Re-use existing data to accelerate development of new models
- Reverse-engineer older or modified parts to obtain actual CAD models



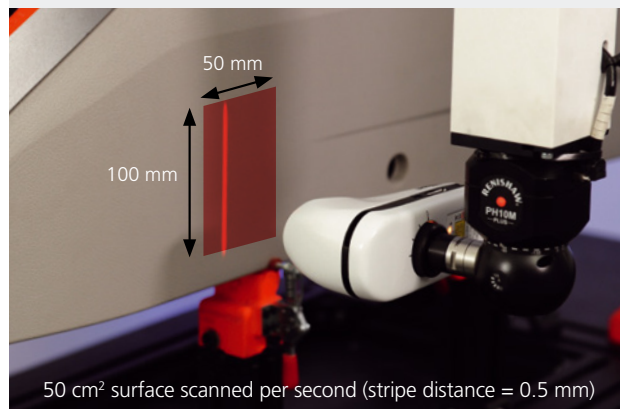
REDUCE COSTS

- Less physical prototype iterations by virtual assembly of individually measured parts
- Laser scanning avoids the need for expensive checking fixtures
- Reduce (online) programming and maximize measuring time

L100 laser scanner

ULTRAFAST DATA COLLECTION

The L100 is ideal to inspect larger components where productivity is key but without having to compromise on accuracy. The 100 mm wide Field-of-View combined with the increased measurement speed results in measurement productivity that wasn't achievable with CMM scanning before.



CAPTURE THE FINEST DETAILS

The L100 is equipped with a high-quality glass Nikon lens optimized for laser scanning. Combined with the high definition camera this results in a point resolution of 42 µm and a data quality that is the best on the market, enabling fine detail capture and measurement of sharper edges. The L100 has an exceptionally small probing dispersion value (according to ISO10360-8 standard) of 26 µm, which is a measure of the scanner's noise level, enabling delivery of smooth meshes and high levels of detail.



ACCURATE FEATURE MEASUREMENT

The L100 is perfectly suited for combined surface and feature measurements. Thanks to the low measurement noise and high point resolution, feature measurement accuracy approaches the accuracy of a touch probe.



COPE WITH CHANGES IN SURFACE COLOR

The 4th generation of Enhanced Sensor Performance (ESP4) adapts the laser intensity for each point in the scan line to varying colors or materials faster than ever. This makes the scanner even more robust for digitizing multi-material assemblies or shiny surfaces without the need for cumbersome surface treatment.



No compromises on accuracy and speed



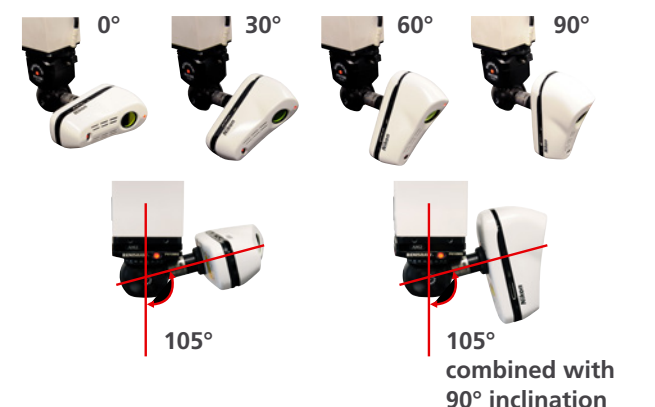
EASY TO USE

The new Field-of-View (FOV) projection provides a clear indication for the user whether the scanner is optimally positioned. This facilitates scanner programming and provides better feedback during actual scanning.



EXTEND THE MEASUREMENT REACH

The patent-pending integrated mount rotation allows the scanner to rotate around its auto-joint axis in 30° increments up to 90°. This is particularly interesting to measure turbine blades or parts with vertically oriented features and edges. The L100 also allows the use of an extended 105° PH10 A-angle allowing better access to measure underneath or behind parts.



Specifications

| | |
|---|-----------------------------------|
| Probing error (MPE_p)¹ | 6.5 µm (0.00026") |
| Ball bar length (MPE_L)² | 6 µm +L/350 mm (0.00024"+L/13.8") |
| Multi-stylus test (MPE_{AL})³ | 6 µm (0.00024") |
| ISO Probing form error⁴ | 15 µm (0.00059") |
| ISO Probing size error all⁵ | 20 µm (0.00079") |
| ISO Probing dispersion value⁶ | 26 µm (0.00102") |
| ISO Cone angle⁷ | 125° |
| Points per stripe | Up to 2,000 (non-interpolated) |
| Scanning speed | 420,000 points/sec |
| Resolution | Max. 42 µm (0.0017") |
| Maximum stripe width | 110 mm (4.3") |
| Measurement depth | 60 mm (2.4") |
| Stand-off distance | 105 mm (4.1") |
| Laser safety | Class 2 |
| Weight | 475 g (1.05 lbs) |
| Ingress Protection | IP30 |
| Enhanced Scanner Performance | ESP4 |
| Daylight filter | Yes |
| Probe head compatibility | PH10M(i)(Q), CW43, PHS |

All accuracy specifications valid for a CMM with an accuracy of 2µm + L/350 or better using manufacturer supplied test sphere

¹ Nikon Metrology test comparable to EN/ISO 10360-2 MPE_p using 1σ sphere fit.

² Nikon Metrology test comparable to EN/ISO 10360-2 MPE_L.

³ Nikon Metrology test comparable to EN/ISO 10360-5 MPE_{AL}.

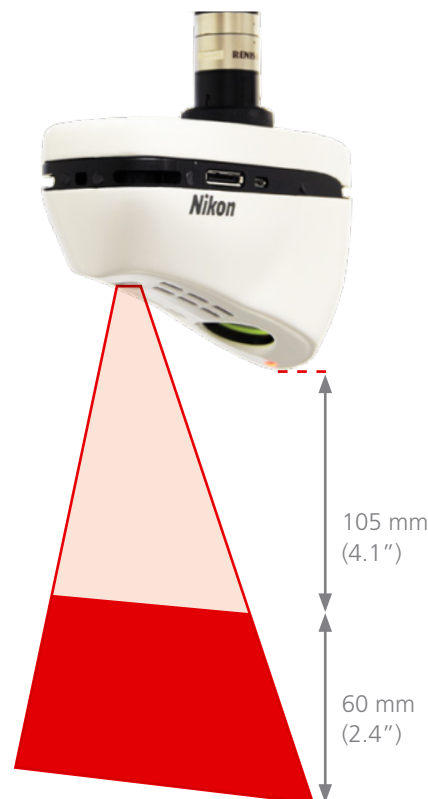
Accuracy specifications according ISO 10360-8:2013:

⁴ P_{Form.Sph.1x25.Tr.ODS,MPE} : "Maximum probing form error" using 25 representative points in translatable scanning mode

⁵ P_{Size.Sph.All.Tr.ODS,MPE} : "Maximum probing size error using All" measured points in translatable scanning mode

⁶ P_{Form.Sph.D95%.Tr.ODS,MPL} : "Maximum probing dispersion value" using 95% of the measured points in translatable scanning mode

⁷ Cone angle : Region of sphere on which the measured points are selected



LASER RADIATION
DO NOT STARE INTO THE BEAM
CLASS 2 LASER PRODUCT
Max output = 1.65 mW 660 nm
1 mW 635 nm
IEC 60825-1 Edition 3.0 2014
Read instruction manual before use

US 6611617; 6944564; 7009717;
7299145; 7313264; 7428061; 8117668;
8353059; RE43895; EP 0840880;
1160539; 1361414; 1754951; 2010863;
2096403 Other intl. / pending patents
Complies with 21 CFR 1040.10
and 1040.11, Laser Notice
No. 50 dated June 24, 2007

L100

Laser scanning beyond expectations



NIKON CORPORATION

1-5-20, Nishioi, Shinagawa-ku, Tokyo 140-8601, Japan
Tel: +81 3 6743 5742 Fax: +81 3 6410 7252
www.nikon.com/products/industrial-metrology/

NIKON METROLOGY EUROPE NV

Interleuvenlaan 86
B-3001 Leuven, Belgium
Tel: +32 16 74 01 00 Fax: +32 16 74 01 03
Sales.Europe.NM@nikon.com

NIKON METROLOGY UK LTD.

UNITED KINGDOM Tel: +44 1332 811 349
Sales.UK.NM@nikon.com

NIKON METROLOGY SARL

FRANCE Tel: +33 1 60 86 09 76
Sales.France.NM@nikon.com

NIKON METROLOGY GMBH

GERMANY Tel: +49 211 45 44 69 51
Sales.Germany.NM@nikon.com

NIKON METROLOGY, INC.

12701 Grand River Road, Brighton,
MI 48116 U.S.A.
Tel: +1 810 220 4360 Fax: +1 810 220 4300
Sales.NM-US@nikon.com

NIKON METROLOGY - MÉXICO

MEXICO Tel: +52 442 688 5067
Sales.NM-MX@nikon.com

NIKON INSTRUMENTS (SHANGHAI) CO. LTD.

CHINA Tel: +86 21 6841 2050 (Shanghai branch)
CHINA Tel: +86 10 5831 2028 (Beijing branch)
CHINA Tel: +86 20 3882 0551 (Guangzhou branch)

NIKON INSTRUMENTS KOREA CO. LTD.

KOREA Tel: +82 2 6288 1900
NIKON SINGAPORE PTE. LTD.
SINGAPORE Tel: +65 6559 3651
NSG.Industrial-sales@nikon.com

PT. NIKON INDONESIA

INDONESIA Tel: +62 213 873 5005
PTN.Instruments@nikon.com

NIKON SALES (THAILAND) CO., LTD.

THAILAND Tel: +66 2633 5100

ISO 14001 Certified
for NIKON CORPORATION

ISO 9001 Certified
for NIKON CORPORATION
Industrial Metrology Business Unit

More offices and resellers at www.nikonmetrology.com